



RV Aranda

Cruise plan 1/2022

Combine 1 Leg 1 GOF

17. - 21.1.2022

Description of the cruise:

Monitoring of underwater sound pressure, harmful substances, hydrography (pH, oxygen, total sulfide, ammonia, nutrients), and physics (temperature and salinity) in compliance with HELCOM COMBINE and EU MSFD monitoring programs.

Additionally

servicing a FMI wave buoy and current meter
hydrophone logger search operations
hydrophone logger installation
sediment trap installation
hydroacoustic method training
large (1 cubic metre) volume water sampling

Chief scientist: Harri Kankaanpää, SYKE

Chief chemist: Pia Varmanen, SYKE, 21.01. - 21.01.

CTD-chief: Heini Jalli, FMI, 21.01. - 21.01.

IT-chief: Ilkka Lastumäki, SYKE, 21.01. - 21.01.
 Staff: Pekka Kosloff, FMI, 21.01. - 21.01.
 Maiju Lehtiniemi, SYKE, 21.01. - 21.01.
 Jere Riikonen, SYKE, 21.01. - 21.01.
 Heini Jalli, -, 21.01. - 21.01.
 Noora Haavisto, -, 21.01. - 21.01.
 Pia Varmanen, -, 21.01. - 21.01.
 Mira Granlund, -, 21.01. - 21.01.
 Outi Setälä, -, 21.01. - 21.01.
 Okko Outinen, -, 21.01. - 21.01.

Altogether 13 scientists.

Departure: HELSINKI Monday 17.01.2022 at 14.00

Arrival: HANKO Friday 21.01.2022 at 15.49

Cruising speed: 9.0 knots.

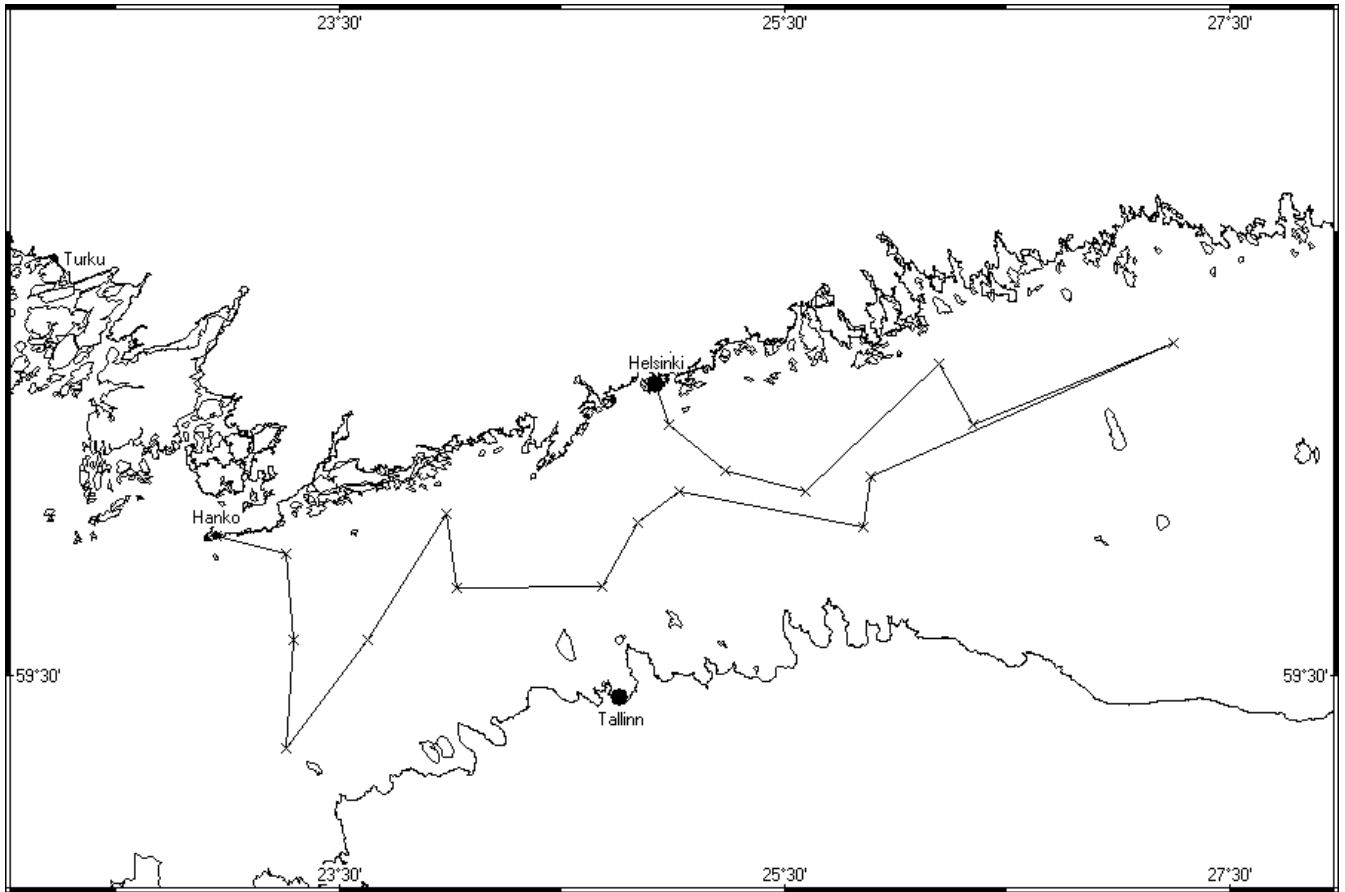
Duration of the cruise: 4 days 1 h 49 min

Length of the cruise: 288,63 nautical miles.

Number of observation stations 18 . Route points named as "P" are transit points only.

Route:

Nro	Name	Lat.	Long.	Depth	Arrival			Duration		Speed
		[WGS-84]		[m]	hh:mm	pv	pp.kk.vvvv	hh	mm	knots
0	HELSINKI	60°09.55'	24°55.37'	0	14.00	ma	17.01.2022	0	0	S 9.00
1	39A	60°04.01'	24°58.81'	41	14.38	ma	17.01.2022	2	45	S 9.00
2	AALTO_HKI	59°57.90'	25°14.10'	62	18.28	ma	17.01.2022	1	30	S 9.00
3	LL5	59°55.01'	25°35.82'	70	21.13	ma	17.01.2022	2	45	S 9.00
4	XIV3	60°12.19'	26°11.57'	77	02.44	ti	18.01.2022	2	45	S 9.00
5	LL3A	60°04.03'	26°20.80'	68	06.31	ti	18.01.2022	4	30	S 9.00
6	XV1	60°15.00'	27°14.82'	64	14.15	ti	18.01.2022	7	0	S 9.00
7	BIAS19	60°15.00'	27°14.88'	55	21.15	ti	18.01.2022	12	0	S 9.00
8	A2_a	59°57.05'	25°53.20'	53	14.11	ke	19.01.2022	1	0	S 9.00
9	GF2	59°50.31'	25°51.41'	84	15.57	ke	19.01.2022	2	45	S 9.00
10	LL6A	59°55.01'	25°01.81'	75	21.31	ke	19.01.2022	2	45	S 9.00
11	LL7	59°50.79'	24°50.27'	100	01.03	to	20.01.2022	5	0	S 9.00
12	GF1	59°42.30'	24°40.93'	84	07.08	to	20.01.2022	2	45	S 9.00
13	LL9	59°42.01'	24°01.81'	69	12.05	to	20.01.2022	2	45	S 9.00
14	XII3	59°52.01'	23°58.81'	38	15.57	to	20.01.2022	2	45	S 9.00
15	JML	59°34.91'	23°37.61'	80	20.56	to	20.01.2022	4	30	S 9.00
16	F62	59°20.01'	23°15.81'	95	03.30	pe	21.01.2022	2	45	S 9.00
17	LL11	59°35.01'	23°17.81'	68	07.56	pe	21.01.2022	2	45	S 9.00
18	LANGDEN	59°46.61'	23°15.77'	57	11.58	pe	21.01.2022	2	45	S 9.00



Route of the cruise Combine 1 leg 1 GOF.